



Capacity-building • Business Development • Policy Action

21/22 Goyal Tower, University Road, Panjrapole  
Ahmedabad 380 015. GUJARAT

Phone: +91 79 2630 1503 Email: [info@sewafederation.org](mailto:info@sewafederation.org)

[www.sewafederation.org](http://www.sewafederation.org)



SEWAFed



SEWAFed



SEWA  
COOPERATIVE  
FEDERATION

Capacity-building • Business Development • Policy Action



CAPACITY BUILDING • BUSINESS DEVELOPMENT • POLICY ACTION

## WHO ARE WE?

Self-Employed Women's Association (SEWA) Cooperative Federation has been working with and for women workers of the informal economy since 1992. The Federation is committed to women's economic empowerment and self-reliance through collective enterprises that are owned, managed and run by women. Our role is to provide a stable support system to women's enterprises, nationally and internationally, enabling sustainability both financially and in terms of decision making.

## OUR VISION

**Informal women workers and their families obtain full employment and achieve self-reliance through cooperatives and other collectives.**

## OUR MISSION

**The holistic economic empowerment of informal women workers for self-reliance, both financial and in terms of decision-making, through their cooperatives and collectives.**

To achieve this goal, the Federation has developed the following multi-dimensional strategy:

- Enable women to gain ownership of their trade through cooperatives and collectives, and to bring them into the mainstream economy.
- Establish a direct relationship between the producers and consumers, thereby eliminating exploitative middle agents.
- Develop collective businesses of the cooperatives through its Women's Enterprise Support System (WESS), focused on enterprise development interventions.
- Undertake capacity-building of cooperative and collective members through skilling, and providing training for good governance.
- Undertake policy action for the rights and interests of workers at the state, national and global levels.
- Bridge the digital gender divide by enabling informal women workers to use digital technologies.



**Lataben**  
President, Megha Mandali  
Tribal Women's Agriculture Cooperative

At present, Megha Mandali works with 1000 members who are able to purchase low cost seeds, equipment, organic fertiliser, etc. Through the linkages of other member cooperatives of SEWA Cooperative Federation, our members are availing low-cost health and insurance services. During the pandemic, when income-generation activities had come to a halt, we received working capital support to continue our farming activities.



**Bhartiben**  
Manager, SEWA Homecare  
Domestic Workers' Cooperative

SEWA Homecare was incubated by SEWA Cooperative Federation - right from writing the byelaws to registering the cooperative. The members of SEWA Homecare have not only benefited from technical skill upgradation and capacity-building, but also have been able to understand the current market, customer needs and demands, and potential new markets - online and offline - through the Federation's research support.



**Rehatben**  
Artisan, Abodana Mandali  
Handicrafts' Cooperative

Earlier, artisans in my community worked for meagre, piece-rate prices. Through SEWA Cooperative Federation's support to strengthen and grow the Abodana cooperative, we have received skill upgradation training, better prices for our work and direct link to local, national and international customers.



**Parvatiben**  
Lok Swasthya Mandali  
Health Cooperative

With no prior knowledge of production, labelling and sales, I joined the health cooperative. SEWA has mentored us about how to use social media to improve our B2C sales and cater to an online audience. We have also improved the packaging and have been able to produce an extensive range of Ayurvedic products and sell them through various business channels.

## OUR SERVICES

We provide specialised services to women's collective enterprises, across sectors, to enable them to become sustainable businesses with the help of a panel of experts and experienced professionals.



## MEMBERSHIPS & PARTNERSHIPS

### NATIONAL & INTERNATIONAL MEMBERSHIP

**National Cooperative Union of India (NCUI)**

and are represented on the NCUI's Women committee

**International Organisation of Industrial and Service Cooperatives (CICOPA)**

**International Health Cooperative Organization (IHCO)**

### PARTNERSHIPS

**Gujarat Livelihood Promotion Company Limited (GLPCL)**

**National Cooperative Development Corporation (NCDC) Council**

**International Labour Organisation (ILO)**

**International Cooperative Alliance (ICA)**

**Women in Informal Employment: Globalizing and Organising (WIEGO)**

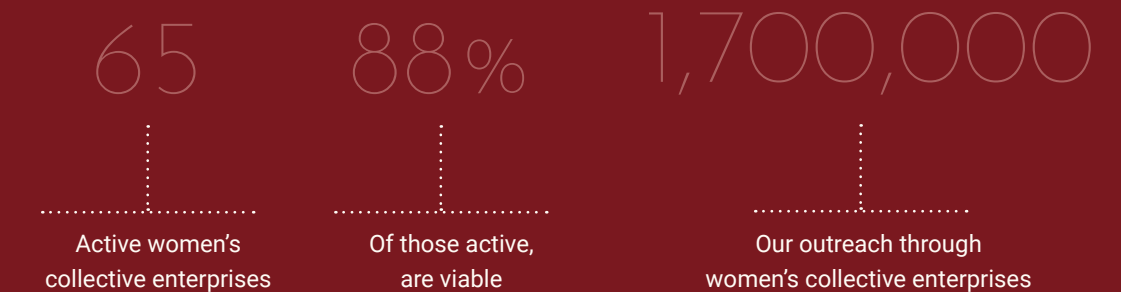
## OUR IMPACT

IN THIRTY YEARS

PROMOTED & SUPPORTED



IN 2021-2022





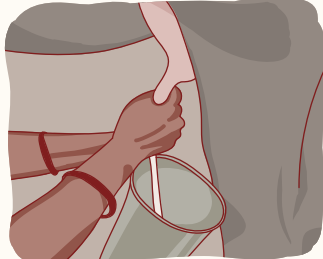
## SECTORS OF WORK



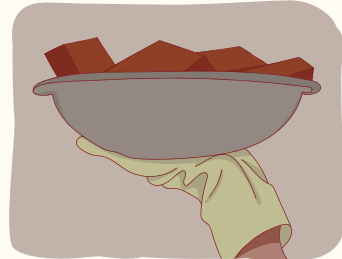
Agriculture



Artisans



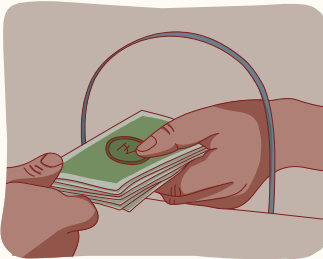
Dairy



Labour-based



Services

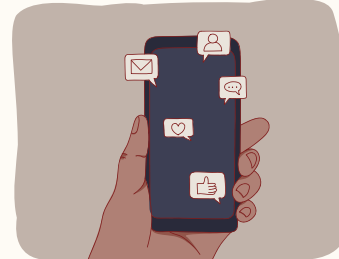


Savings & Credit

## FOCUS AREAS



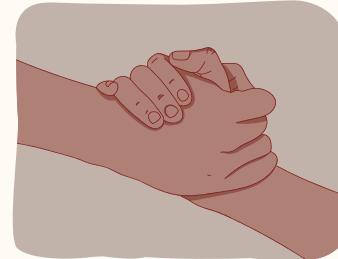
Economic Sustainability



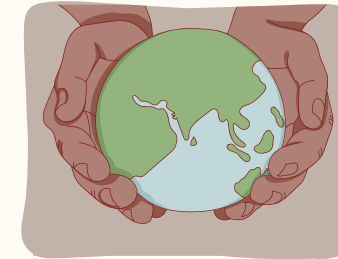
Digitalisation



Innovation



Youth Inclusion



Climate Action

